

DISTRICT EIGHT

MATERIAL INDEX

UPDATED

JAN 2023

MATERIAL INDEX

WOOD p.03

METAL p.04

STONE p.05

FABRIC **GRADE A** p.06

GRADE B p.07

GRADE C p.08

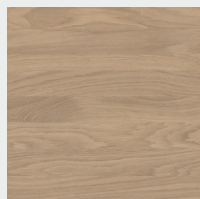
GRADE D p.08

GRADE E p.08

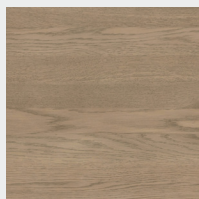
LEATHER p.09

MATERIAL INDEX

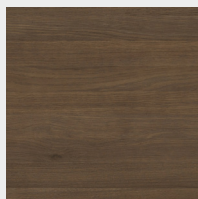
WOOD /



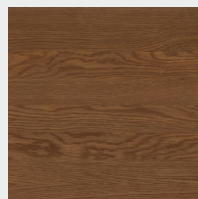
Raw Oak
MOO



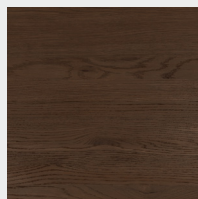
Beige Oak
MBO



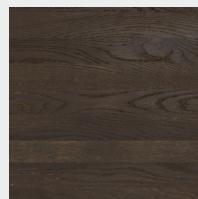
Dry Smoked Oak
MDO



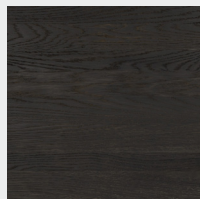
Hard Fumed Oak
MHO



Smoked Oak
MKO



Seared Oak
MSO



Ebonized Oak
MEO



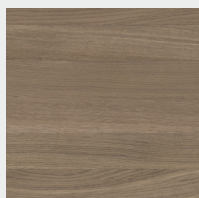
Charred Black Oak
MCO



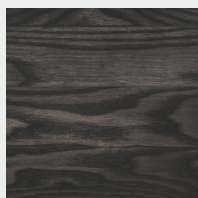
Faded Oak
MFO



Light Ash
MLA



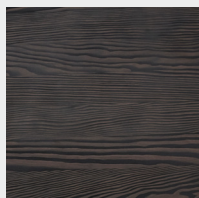
Grey Ash
MGA



Charcoal Ash
MCA



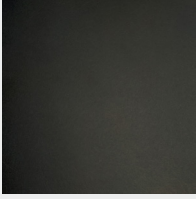
Light Fir
MLF



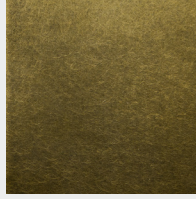
Burned Fir
MBF

MATERIAL INDEX

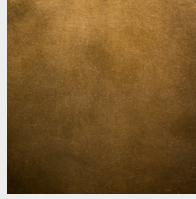
STEEL /



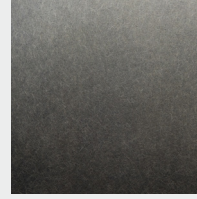
Blackened Steel
BL



Antique Brass
AB



Antique Copper
AC



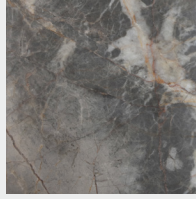
Antique Nickel
AN

MATERIAL INDEX

STONE /



Black Marble
BLA



Grey Marble
GRE

MATERIAL INDEX

FABRIC / GRADE A

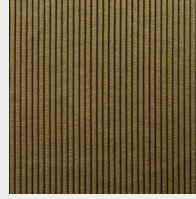
CORDUROY



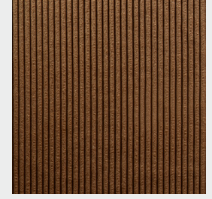
Corduroy Mist
1111



Corduroy Fog
1110

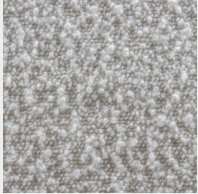


Corduroy Mustard
1112

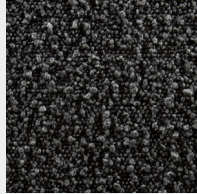


Corduroy Cinnamon
1109

BOLO



Bolo Ivory
1127



Bolo Flint
1129



Bolo Brick
1128

SONA



Sona Ivory
1115



Sona Fog
1116



Sona Flint
1118



Sona Brick
1117

NAMI



Nami Ivory
1119



Nami Thunder
1121



Nami Flint
1123



Nami Wheat
1120

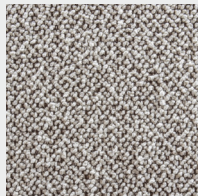


Nami Brick
1122

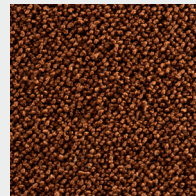
SABI



Sabi Ivory
1124



Sabi Ivory Garnet
1125



Sabi Brick
1126

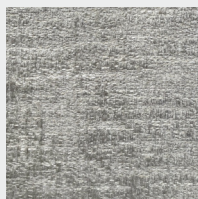
MATERIAL INDEX

FABRIC / GRADE B

ARDA



Arda Pearl
1023



Arda Thunder
1037



Arda Moonstone
1048

GEMA



Gema Pearl
1027



Gema Thunder
1036



Gema Moonstone
1049

TARA



Tara Ivory
1085



Tara Quartz
1052



Tara Flint
1050

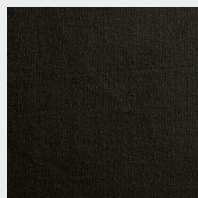
FLER



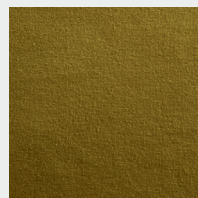
Fler Pearl
1144



Fler Taupe
1152



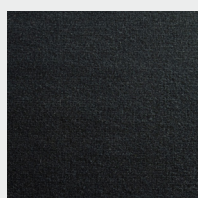
Fler Flint
1146



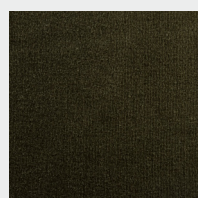
Fler Mustard
1145



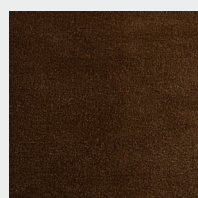
Fler Bark
1150



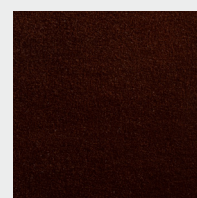
Fler Ocean
1151



Fler Forest
1147

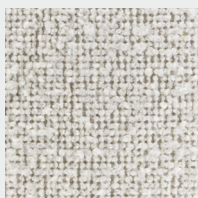


Fler Brick
1149



Fler Garnet
1153

FAMO



Famo Ivory
1163

MATERIAL INDEX

FABRIC / GRADE C

NOAH



Noah Ivory
1162



Noah Bark
1161

FABRIC / GRADE D

NEOS



Neos Pearl
1159



Neos Flint
1160



Neos Bark
1158

FABRIC / GRADE E

SILA



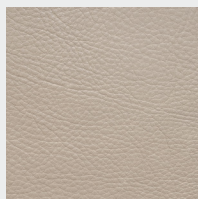
Sila Fog
1157

MATERIAL INDEX

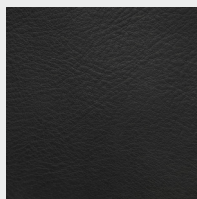
LEATHER /



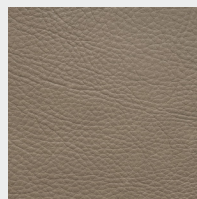
Omari Chocolate
CH



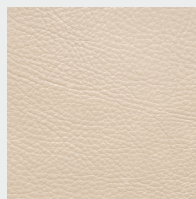
Omari Putty
PU



Omari Ink Black
IB



Omari Sepia
SE



Omari Burlap
BU

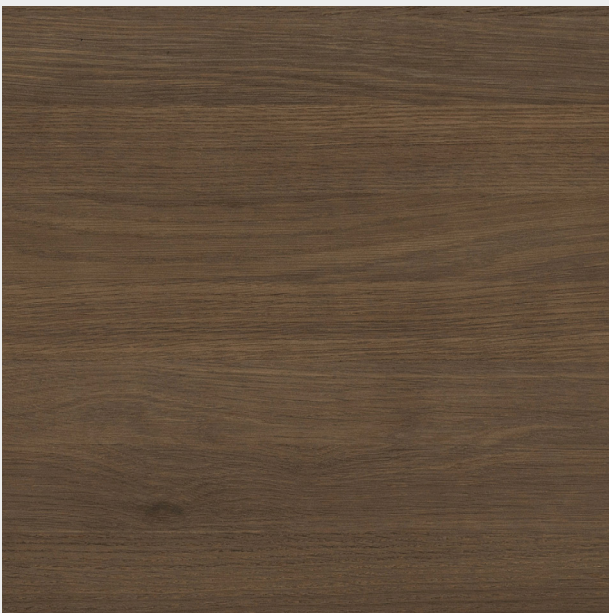
WOOD /



Raw Oak
MOO



Beige Oak
MBO



Dry Smoked Oak
MDO



Hard Fumed Oak
MHO

WOOD /



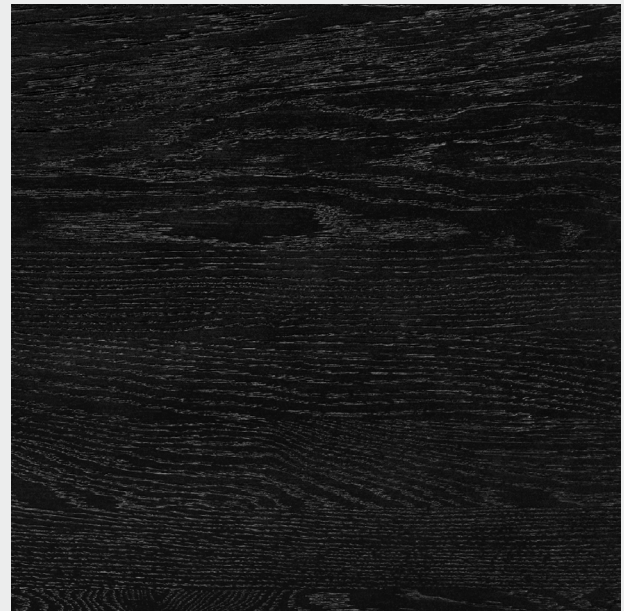
Smoked Oak
MKO



Seared Oak
MSO



Ebonized Oak
MEO



Charred Black Oak
MCO

WOOD /



Faded Oak
MFO



Light Ash
MLA



Grey Ash
MGA

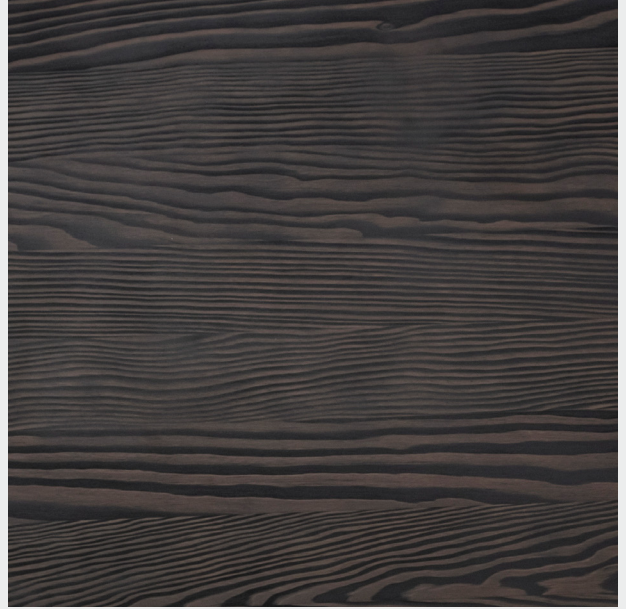


Charcoal Ash
MCA

WOOD /



Light Fir
MLF



Burned Fir
MBF

METAL /



Blackened Steel
BL



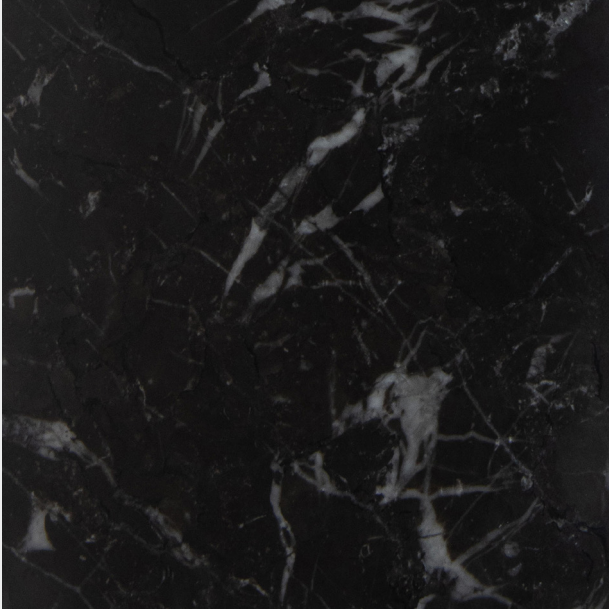
Antique Brass
AB



Antique Copper
AC



Antique Nickel
AN



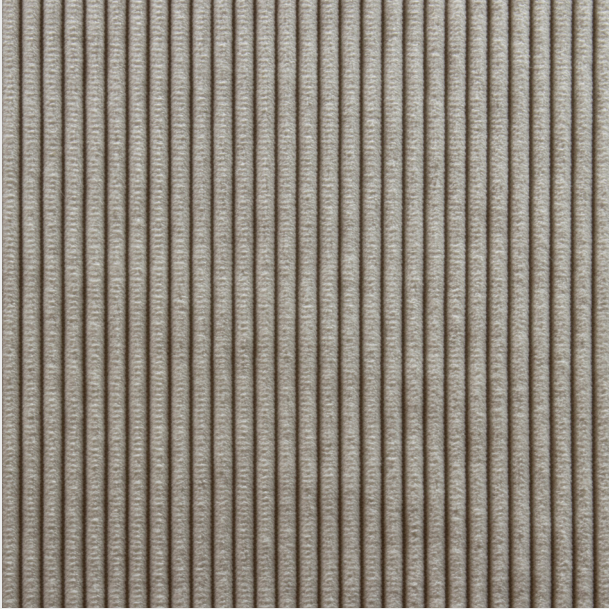
Black Marble
BLA



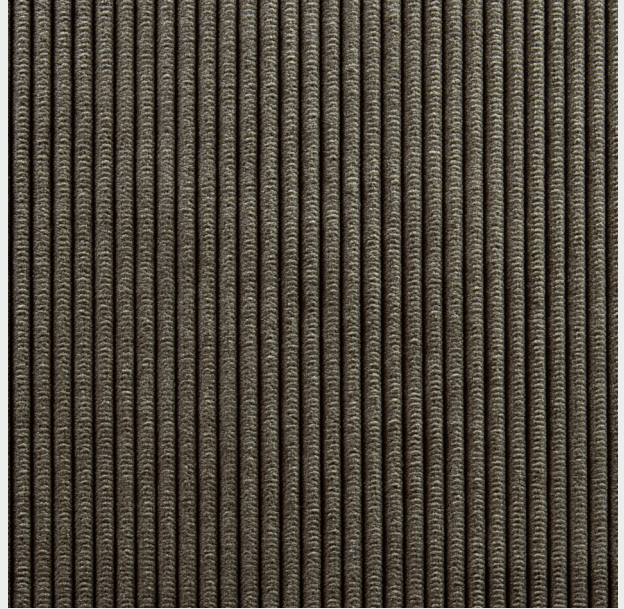
Grey Marble
GRE

MATERIAL INDEX

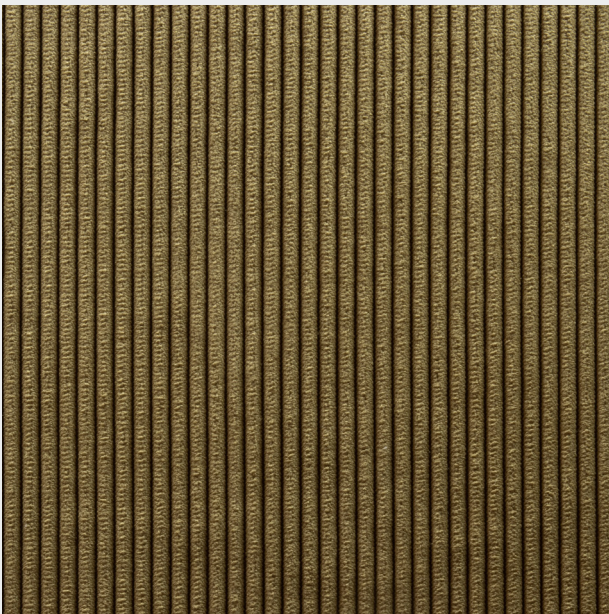
FABRIC / GRADE A



Corduroy Mist
1111



Corduroy Fog
1110



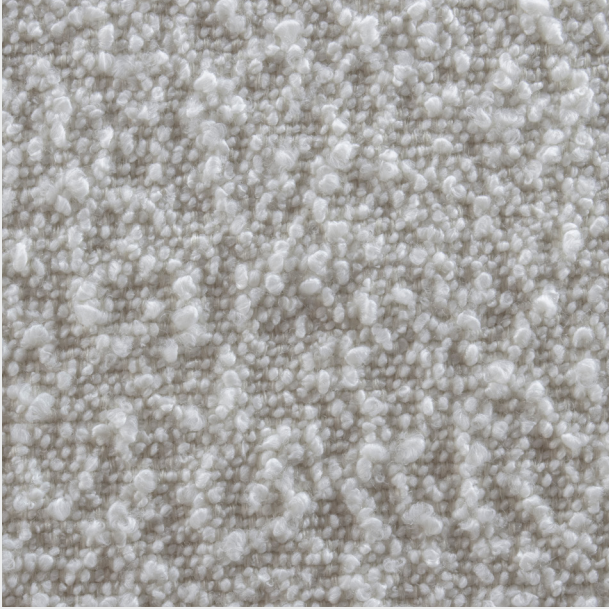
Corduroy Mustard
1112



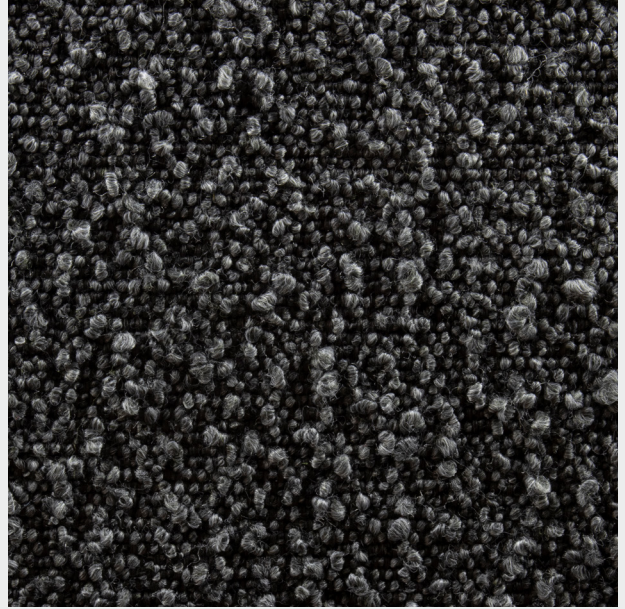
Corduroy Cinnamon
1109

MATERIAL INDEX

FABRIC / GRADE A



Bolo Ivory
1127



Bolo Flint
1129



Bolo Brick
1128

MATERIAL INDEX

FABRIC / GRADE A



Sona Ivory
1115



Sona Fog
1116



Sona Flint
1118



Sona Brick
1117

MATERIAL INDEX

FABRIC / GRADE A



Nami Ivory
1119



Nami Thunder
1121



Nami Flint
1123



Nami Wheat
1120

MATERIAL INDEX

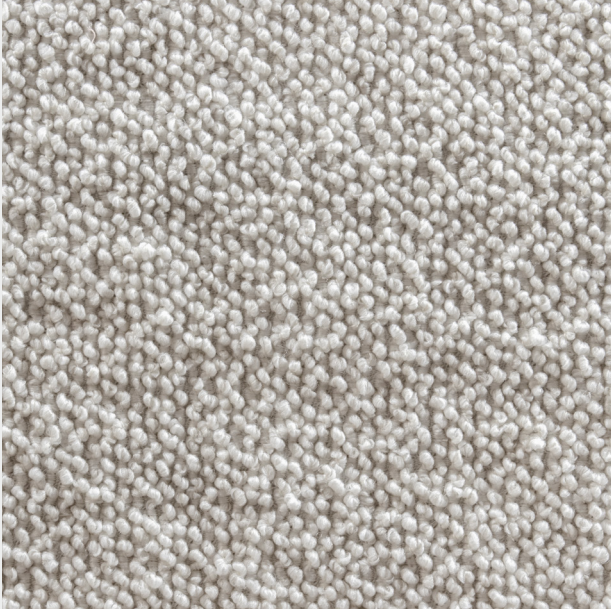
FABRIC / GRADE A



Nami Brick
1122

MATERIAL INDEX

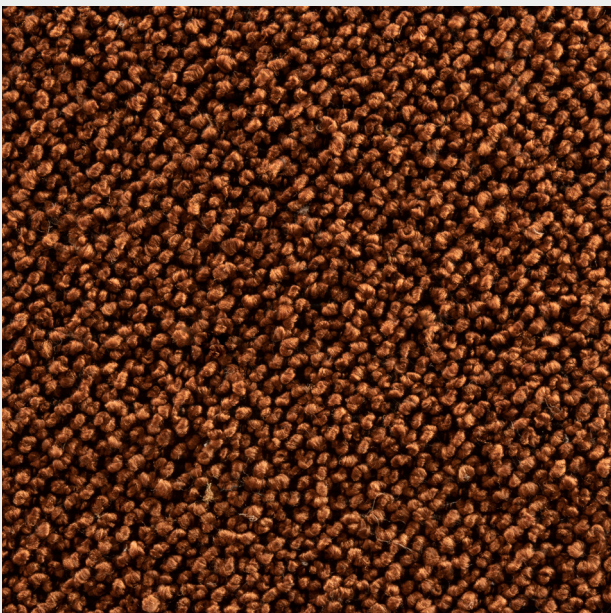
FABRIC / GRADE A



Sabi Ivory
1124



Sabi Ivory Garnet
1125



Sabi Brick
1126

MATERIAL INDEX

FABRIC / GRADE B



Arda Pearl
1023



Arda Thunder
1037



Arda Moonstone
1048

MATERIAL INDEX

FABRIC / GRADE B



Gema Pearl
1027



Gema Thunder
1036



Gema Moonstone
1049

MATERIAL INDEX

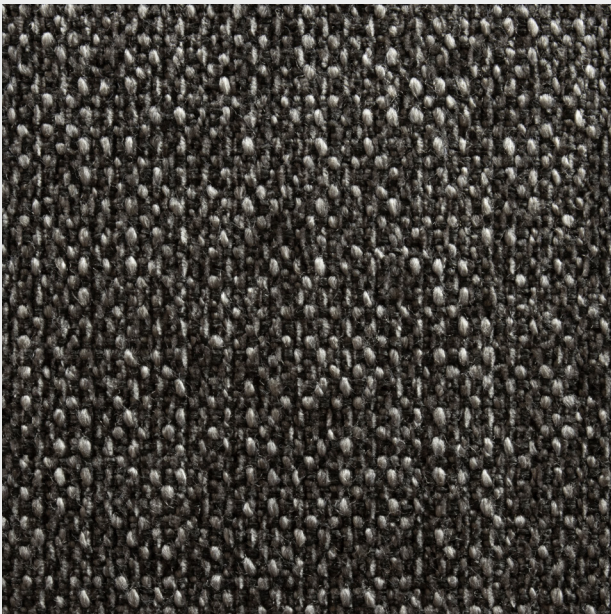
FABRIC / GRADE B



Tara Ivory
1085



Tara Quartz
1052



Tara Flint
1050

MATERIAL INDEX

FABRIC / GRADE B



Fler Pearl
1144



Fler Taupe
1152



Fler Flint
1146



Fler Mustard
1145

MATERIAL INDEX

FABRIC / GRADE B



Fler Bark
1150



Fler Ocean
1151



Fler Brick
1149

MATERIAL INDEX

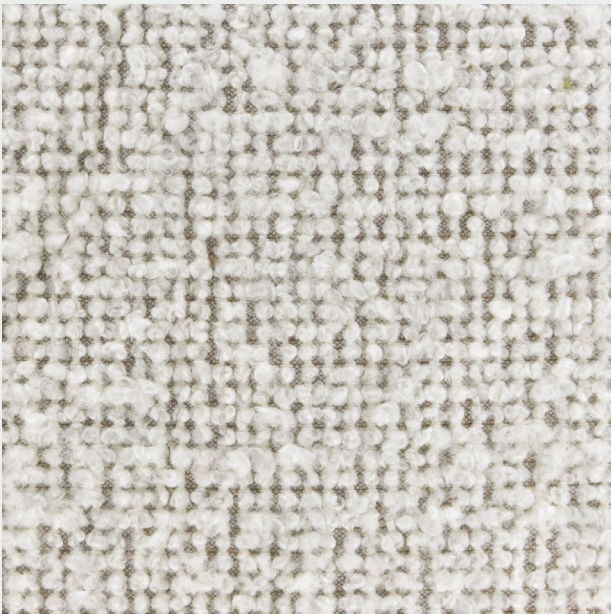
FABRIC / GRADE B



Fler Forest
1147



Fler Garnet
1153



Famo Ivory
1163

MATERIAL INDEX

FABRIC / GRADE C



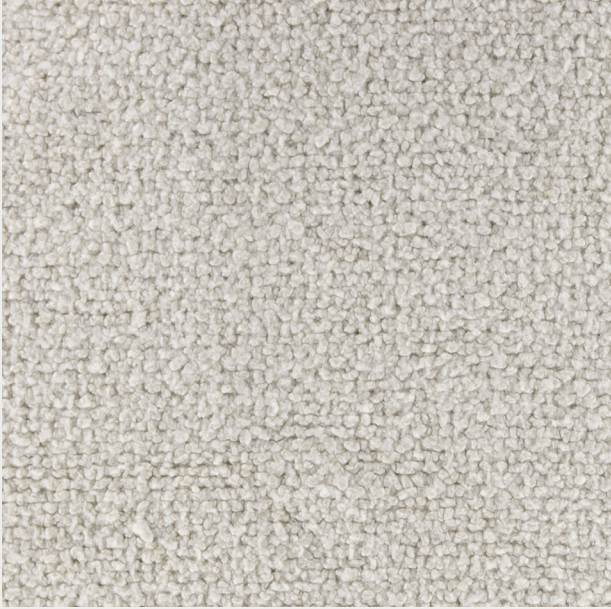
Noah Ivory
1162



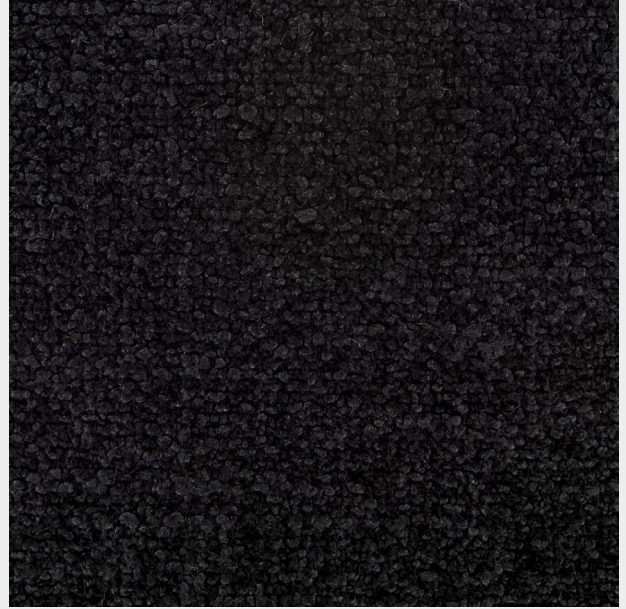
Noah Bark
1161

MATERIAL INDEX

FABRIC / GRADE D



Neos Pearl
1159



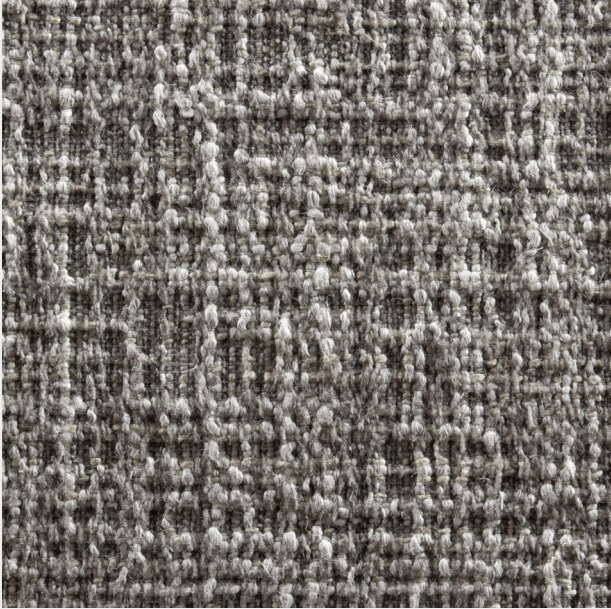
Neos Flint
1160



Neos Bark
1158

MATERIAL INDEX

FABRIC / GRADE E



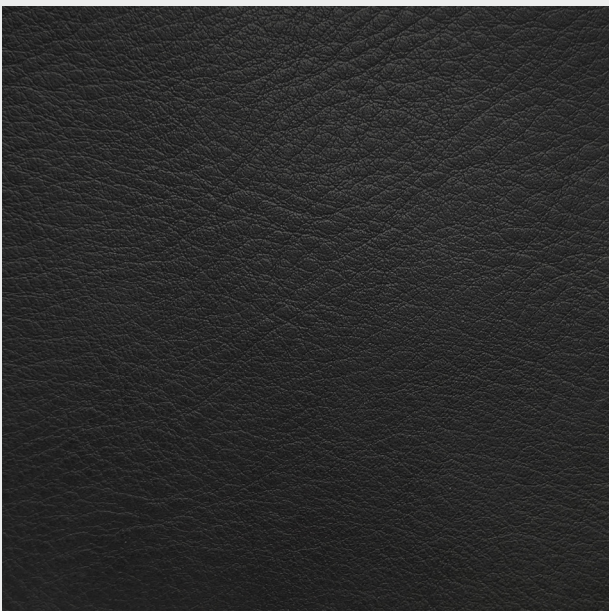
Sila Fog
89



Omari Chocolate
CH



Omari Putty
PU



Omari Ink Black
IB



Omari Sepia
SE

MATERIAL INDEX

LEATHER /



Omari Burlap
BU

The exclusive District Eight warranty is available only to you, the original purchaser, and becomes effective with your delivery date. District Eight will repair or replace at our discretion any piece of furniture that is defective in material or workmanship under terms and conditions outlined here. If District Eight determines that a repair is impractical, you will be furnished a substitute of the same or similar color, design, and quality.

OUR COMMITMENT & WARRANTY

- District Eight warrants to you, the original buyer, that goods shall be free of defects in material and/or workmanship attributable to manufacture for a period specified in the warranty details below. Damage resulting from improper handling after merchandise is received or from exposure to weather or extreme atmospheric conditions is not covered by the District Eight warranty. Warranty is subject to normal use under normal conditions. Effective with products purchased on or after June 1, 2015.

DURATION OF WARRANTY

- For products invoiced to a company, District Eight offers a **1-year warranty** from date of delivery against manufacturer's defects. Qualified defects will be repaired or replaced at company's option, at no cost to the customer.
- For products invoiced to an individual, District Eight offers a **2-year warranty** from date of delivery against manufacturer's defects. Qualified defects will be repaired or replaced at company's option, at no cost to the customer.

LIMITATIONS & COVERAGE EXCLUSIONS

Effective with products purchased on or after June 1, 2015. District Eight makes no implied warranties of merchantability or fitness for a particular purpose. These and all other implied warranties are specifically disclaimed. By implied warranties, District Eight references warranties that the law sometimes implies to have been given by the seller, even though they are not documented in writing.

PLACE OF PURCHASE

- Our warranty protects purchases from Authorized District Eight Distributors, Wholesalers, Retailers and from District Eight directly through our showroom or website.

IMPROPER CARE AND USE

- Proper care and usage are essential to preserving your rights under the warranty. This warranty does not apply if your District Eight merchandise is damaged by the use of detergents, abrasives or harsh cleaning agents.

ACCIDENTS, ABUSE, NORMAL WEAR & TEAR

- This warranty does not cover damage resulting from negligence, abuse, normal wear and tear, or accidents: including (but not limited to) burns, cuts, scratches, tears, scuffs, watermarks, indentations or pet damage.

PRODUCT MODIFICATIONS

- Any product modification by retailer, consumer or other parties not authorized by District Eight will void this warranty.

FLOOR SAMPLES OR AS-IS PURCHASES

- This warranty does not cover floor samples or products designated "as is" at time of purchase.

TOLERANCES

- COM must be approved by District Eight to ensure suitability for upholstery.
- All sizes and dimensions are subject to a 0.05cm tolerance.
- Any colour samples or samples of wood can only be considered as a guide. District Eight cannot be held responsible for any differences between the sample and the delivered goods, as colour changes occur naturally over time. Variances are not considered to be defects. Wear and tear due to normal everyday use on upholstery, surfaces etc. are not considered to be defects.

CLAIMS PROCEDURE

- First and foremost, should you notice a manufacturing defect, it is important that you promptly notify the District Eight sales and marketing team. To exercise your rights under this warranty, you must submit the original invoice number, date of damage or defect, product and description, evidence of damage (photo or video) and how it occurred via the claims form.

- Please find the claim form on our website at districteight.com/pages/warranty-information

- For your convenience, there are a number of ways you may contact us: in writing, via fax, email or online as follows:

INFO@DISTRICTEIGHT.COM
(+84) 28 38 170 310

GENERAL CONDITION

- Any liability for District Eight is in any case excluded with respect to the technical and aesthetic performance of the products upholstered using the Client's own fabric or Client's own leather.
- Orders relating to products to be covered in fabric and leather will only be accepted for models where the price list indicates "COM".
- We reserve the right to reject any COM that we feel inadequate for any reason, and we are not responsible for any unsatisfactory results or deficiencies where COM or COM is used or involved.

REQUIREMENT OF SAMPLE

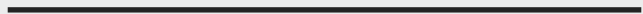
- District Eight requires a sample to be sent free of all expenses, together with a data sheet of the COM, for the purpose of a feasibility study.
- The COM samples should be minimum cm 30 x 30 in size for the necessary tests and should be sent to the attention of the District Eight, together with the fully filled document "COM MANAGEMENT FORM".

MATERIALS CONDITIONS:

- Linear meters (or Yardage) quoted in the price list is approximate only. Linear meters (or Yardage) requirements for cover material are based on plain fabric cm 140 (55") width minimum. Fabrics measuring less than cm 140 in height may require additional fabric and/or, in some cases, may not be feasible and/or may require the inclusion of additional seams for particular models.
- Fabric requirements for patterns will be estimated upon receipt of a sample; as a rule, District Eight does not pattern match.
- Zipper and thread will follow District Eight available option; customer can send zipper and thread along with COM if preferred.
- For fabrics with repeat patterns, please specify the pattern size (vertically/horizontally) on the "COM MANAGEMENT FORM"
- For orders in COM for Projects/Contracts, it is necessary to send the flame-retardant certificate of COM to ensure suitability for the public spaces use.

SHIPPING OF CUSTOMER OWN FABRIC AND/OR CUSTOMER OWN LEATHER

- Execution of a COM order and shipping terms order shall have validity from the date the COM is registered, following the receipt of COM and confirmation of feasibility, and shall be communicated by the Customer Service who will send the order confirmation.
- When a COM order is confirmed, District Eight shall not be held liable for any faults in appearance and durability, or for any other quality, technical or aesthetic issue concerning the products made using the COM.
- Certificate of Origin COM or any special required documents by local authorities when deliver the order need to be provided by Customer.



COM MANAGEMENT FORM

CUSTOMER*:

ORDER NUMBER*:

SHIPPED FROM*

Manufacturer:

Dealer:

Other supplier:

Name of fabric/leather MANUFACTURER*

Name of COM

Color Reference

Composition

Quantity

Fabric Height

COM in compliance with:

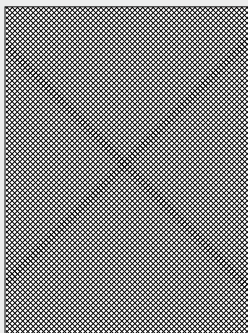
Attached certificate

COM special treatments and customer's remarks:

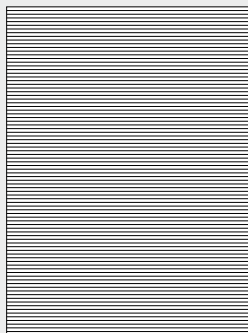
IMPORTANT NOTES:

- Unless otherwise specified, the "correct" face of the fabric is the internal side turned towards the roll
- Unless otherwise specified, the product will be realized with the fabric pattern laid out vertically (e.g. Figure C)

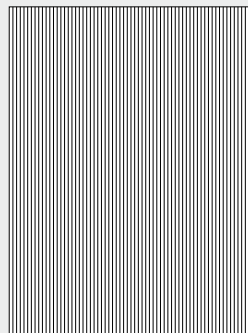
(A)



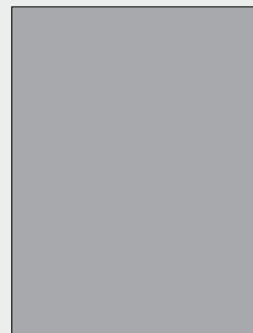
(B)



(C)



(D)





DISTRICT EIGHT DESIGN OFFICE & FACTORY

E4/52, 1A Highway, Binh Tri Dong B Ward,
Binh Tan District, Ho Chi Minh City, Vietnam

P. (+84) 28 38 170 311
(+84) 28 38 170 312

E. info@districteight.com

W. www.districteight.com
